

## ROVVER



Funny name for a Closed Circuit Video Inspection Unit, but that's what [EverestVIT](#) calls it.

Actually, that is the name of the crawler part. Pictured above is a Pan and Tilt Camera Head mounted on a Rovver 600 Crawler.

The rest of the package includes a 600 foot motorized cable reel, the control unit with remote pendant, auxiliary lights, a VHS video recorder, a couple of monitors, a power inverter, and tool box.

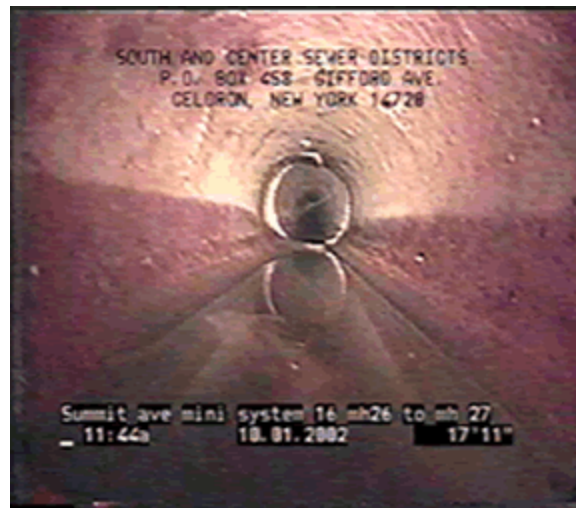
All this is installed in a 2002 Chevrolet Express Cargo Van.



Rovver is very good at finding Broken Pipe, Cracked Pipe, Offset Joints, Roots, Protruding Taps, Grit, Sags, Grease, Obstacles, etc.

Now if we can teach him to roll over, oh wait, he can roll over, what he needs to learn is how to roll *BACK* over onto his feet (wheels).

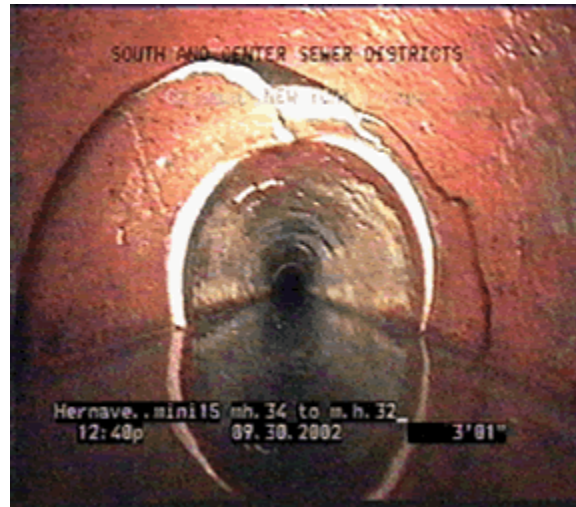
### PICTURES OF SOME OF THE PROBLEMS ROVVER FINDS



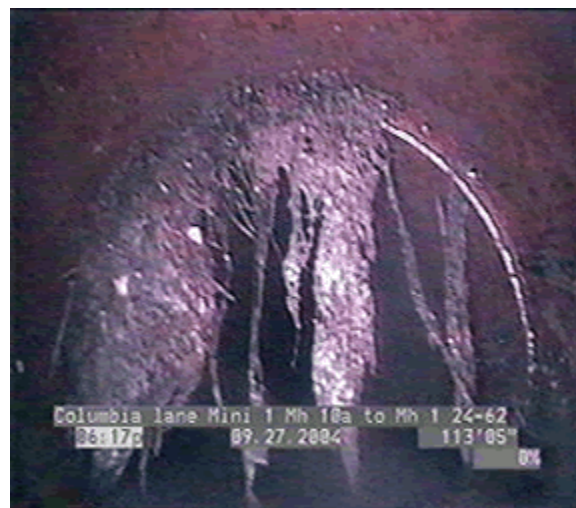
### Cracked Pipe



## Broken Pipe



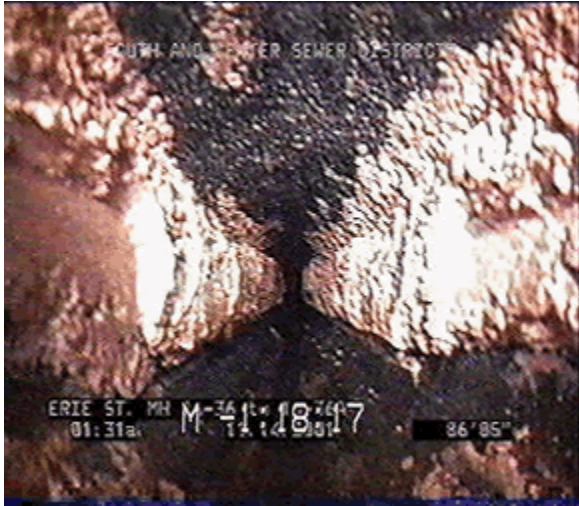
## Roots



### Heavy Roots



### Grease



## Offset Joint



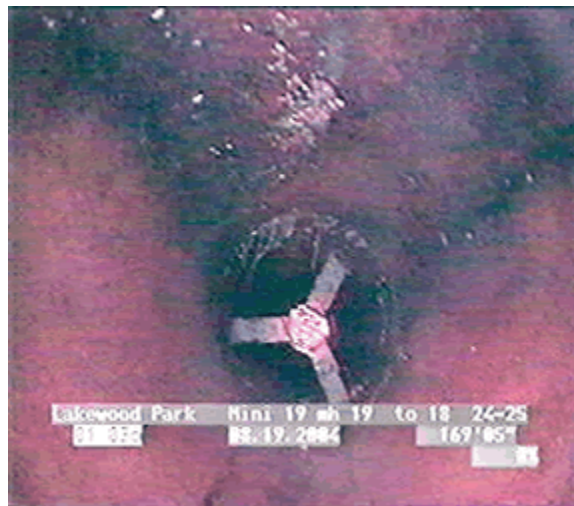
## Obstruction



## Protruding Tap



## Rodney



These are NOT the worst pictures we have, they are just examples.

Some of the pipe we have was installed in the late 20's making it over 70 years old. Cracks and Breaks can be a problem.

Roots are probably our biggest problem. Sometimes the roots get so bad they completely block sewer flow.

Yes, that *is* what grease does in the sewer, so try and empty your bacon grease (and all other grease) in a can and throw it away.

Yes, that is a natural gas line punched through the sewer pipe. That's why New York State has now made it mandatory that everyone call [UFPO\(Dig Safely NY\)](#) every time they work underground. 1-800-962-7962.

What's a Rodney? Rodney is our root cutter. Rovver is like a watchdog for Rodney, he assists in making sure Rodney gets all the roots.

See Rovver in action along with Rodney and our flush truck (we don't have a name for him). [ROVVER the MOVIE](#)