

**DRAFT SCOPING DOCUMENT**  
**DRAFT SUPPLEMENTAL ENVIRONMENTAL  
IMPACT STATEMENT**

**Proposed Project:**

**Chautauqua County Landfill  
Phase IV Lateral Expansion**

**Project Location**

**Chautauqua County Landfill  
3389 Towerville Road  
Jamestown, New York 14701**

**Project Sponsor/Applicant**

**Chautauqua County Department of Public Facilities  
Division of Solid Waste  
3889 Towerville Road  
Jamestown, NY 14701**

**Lead Agency**

**New York State Department of Environmental Conservation  
Region 9, Buffalo Office  
270 Michigan Avenue  
Buffalo, N.Y. 14203**

**Comments will be accepted by the Lead Agency until December 3, 2010**

**Positive Declaration Issued:** October 27, 2010

**Lead Agency Contacts:** David S. Denk  
Regional Permit Administrator  
NYSDEC, Region 9  
Division of Environmental Permits  
270 Michigan Avenue  
Buffalo, N.Y. 14203-2915  
(716) 851-7165

**Project Sponsor/Applicant Contact:** Pantelis K. Panteli, P.E.  
Deputy Director – Public Facilities, Landfill Manager  
Chautauqua County Department of Public Facilities  
Division of Solid Waste  
3889 Towerville Road  
Jamestown, New York 14701  
(716) 985-4785

**SEQR-Related Materials are available at:**

<http://www.co.chautauqua.ny.us>

Use the “Departments and Agencies” menu to select the “Public Facilities” link. Pick the “Landfill” icon on the Public Facilities webpage. Then, select the “Proposed Lateral Expansion Documents” link, under “Documents and Forms.”

## TABLE OF CONTENTS

	<u>Page No.</u>
1.0	Introduction.....1-1
1.1	Purpose and Description of Proposed Action .....1-1
2.0	State Environmental Quality Review Act Process.....2-1
2.1	Initial and Subsequent SEQR Reviews.....2-1
2.2	Supplemental SEQR Review .....2-2
2.2.1	Scoping Process and Purpose.....2-3
2.2.2	Draft Supplemental Environmental Impact Statement and Public Comment Period.....2-5
2.2.3	Final Supplemental Environmental Impact Statement.....2-5
2.2.4	Statement of Findings .....2-6
3.0	SEQR Review Agencies .....3-1
4.0	Content of the DSEIS.....4-1
4.1	Executive Summary .....4-1
4.2	State Environmental Quality Review Act Process.....4-1
4.3	Description of the Proposed Action .....4-1
4.4	Environmental Setting.....4-2
4.5	Potential Environmental Impacts and Mitigation Measures .....4-2
4.5.1	Geology and Soils .....4-3
4.5.2	Land Use and Community Character .....4-3
4.5.3	Air Quality .....4-4
4.5.4	Surface and Groundwater Quality.....4-5
4.5.5	Ecology .....4-7
4.5.6	Visual and Aesthetic Resources .....4-8
4.5.7	Noise .....4-8
4.5.8	Odors.....4-9
4.5.9	Traffic .....4-10
4.5.10	Cultural Resources .....4-10
4.5.11	Leachate Collection and Treatment .....4-11
4.5.12	Socioeconomic Factors .....4-11
4.5.13	FAA Requirements .....4-11
4.6	Alternatives to the Project.....4-12
4.7	Other Required Statements .....4-13
4.7.1	Construction-Phase Impacts.....4-13
4.7.2	Cumulative Impacts .....4-13
4.7.3	Unavoidable Adverse Environmental Impacts.....4-13
4.7.4	Irreversible and Irretrievable Commitment of Resources .....4-13
4.7.5	Growth-Inducing Aspects .....4-13
4.7.6	Effects on the Use and Conservation of Energy .....4-14
4.7.7	Solid Waste Management .....4-14
5.0	Information to be included in Appendices in the DSEIS .....5-1

## FIGURES

Figure 1	Chautauqua County Landfill Existing Site and Project Location
Figure 2	SEQR Process Flow Chart
Figure 3	SEQR Process Time Frames

## **ATTACHMENTS**

Attachment A	Positive Declaration
Attachment B	Notice of Public Scoping Meeting

## **1.0 INTRODUCTION**

The Chautauqua County Department of Public Facilities, Division of Solid Waste (CCDPF), currently owns and operates the 83.5-acre Chautauqua County Landfill located on Towerville Road in the Town of Ellery, Chautauqua County, New York. The Chautauqua County Landfill was initially permitted in 1981 and included three phases (Phase I, Phase II and Phase III) (Figure 1). Municipal solid wastes are presently being disposed in Phase II, the active portion of the landfill. Phase I and III are inactive and have been capped.

Each phase of the Chautauqua County Landfill includes a liner and leachate collection, groundwater monitoring, storm water collection, and landfill gas control systems. These control systems are operated and maintained in accordance with the existing Part 360 Solid Waste Management Facility Permit (Permit No. 9-0636-00006/00010), Title V Facility Air Permit (Permit No. 9-063600006/00017), and State Pollutant Discharge Elimination System (SPDES) Multi-Sector General Permit for Stormwater Discharges Associated with Industrial Activity (Permit No. GP-0-06-002) issued by the New York State Department of Environmental Conservation (NYSDEC).

### **1.1 Purpose and Description of Proposed Action**

Based on current rates of incoming solid waste, it is anticipated that the existing permitted landfill space will be exhausted by 2010. The NYSDEC recently issued a permit modification to the CCDPF for a vertical expansion over Phases I, II and III of the existing landfill. This vertical expansion provides the CCDPF approximately three additional years of disposal volume, through the end of 2013.

In order for the CCDPF to continue providing landfill services to County residents beyond 2013 in accordance with the Chautauqua County Solid Waste Management Plan, it will be necessary to further expand the existing landfill. To accomplish this, the CCDPF proposes to undertake a lateral expansion project on land contiguous to the Phase II portion of the existing landfill (Figure 1). The CCDPF is seeking modification of its Part 360 Solid Waste Management Facility Permit to construct and operate the lateral expansion, which would be designed to receive the currently permitted limit of approximately 1,883 tons of solid waste per day with a design life of 20 years (the Project). The CCDPF does not propose to change the permitted disposal rate.

The Project (also known as Phase IV Lateral Expansion) is described as follows:

- The 52.7-acre landfill expansion will be built in three separate stages. The total footprint of the Project including cells, perimeter berms, roads, stormwater channels, two stormwater management ponds, and associated grading, will be approximately 74.1 acres (Project area). The proposed expansion will be located adjacent to and west southwest of the currently active landfill.
  
- The two stormwater management ponds will be constructed to the south of the proposed expansion area. The ponds and surface water management system will control runoff from the new landfill phase during and after construction in accordance with the design requirements of New York SPDES program General Permit GP-0-10-001 for Stormwater Discharges from Construction Activity. (The actual SPDES permit for the project will be a modification of the CCDPF's existing SPDES permit for the landfill operations, issued under the SPDES Multi-Sector General Permit for Stormwater Discharges Associated with Industrial Activities. The CCDPF's existing Storm Water Pollution Prevention Plan will be modified to include the expanded facilities). The ponds and surface water management system will be designed to ensure that post-development storm flows do not exceed pre-development conditions.

The two most important components of the landfill design and operation are the leachate collection system (including the liner) and the gas collection system.

- The liner and leachate collection systems proposed for each cell comprise generally, from the bottom up, the following:
  - a secondary composite liner, consisting of 2 feet of low permeability soil overlain by a 60-mil thick high density polyethylene (HDPE) geomembrane liner;
  
  - a secondary leachate collection and removal system, consisting of a highly transmissive geosynthetic drainage composite, assisted by slotted HDPE pipes in bedding stone;

- a primary composite liner, consisting of 1 foot of compacted soil, a geosynthetic clay layer (a layer of high-swelling sodium montmorillonite clay between two geotextiles), and a 60-mil HDPE liner; and
- a primary leachate collection and removal system, consisting of a geosynthetic drainage composite (GDC) overlain by a two foot thick layer of fine aggregate, within which will be slotted HDPE collection pipes.

This liner system will meet or exceed all of the requirements of the NY State regulations for the design of municipal solid waste management facilities. The liner system will be constructed so that there is a minimum of 20 feet of dense glacial till soil overlying the upper bedrock. Below the liner system will be a pore water drainage (i.e., groundwater suppression) layer, comprising a geosynthetic drainage composite and piping. The porewater drainage layer will prevent groundwater from exerting uplift pressures on the liner system components during construction.

The two leachate collection and removal systems will each terminate at the downslope end of the liner system at a “sideslope riser” pumping system. Each of those systems will comprise submersible pumps, sideslope risers, metering, sampling and control structures. Leachate will be pumped by this system to the existing Phase II leachate storage pond from which the leachate is then pumped to the City of Jamestown Board of Public Utilities wastewater treatment plant.

- The existing landfill gas collection and control system will be expanded to collect, control and convey the landfill gas generated by the lateral expansion. Landfill gas will be utilized by the existing cogeneration facility or flared.

## **2.0 STATE ENVIRONMENTAL QUALITY REVIEW ACT PROCESS**

The State Environmental Quality Review Act (SEQR) requires all state, regional, and local government agencies to consider potential environmental impacts equally with social and economic factors during preliminary stages of proposed development projects. Involved agencies must assess the environmental significance of all actions they have discretionary authority to approve, fund or directly undertake. It is not the intent of SEQR that environmental factors be the sole consideration in the decision-making process. SEQR requires the agencies to balance the environmental impacts with social, economic, and other essential considerations when deciding to approve or undertake an action.

### **2.1 Initial and Subsequent SEQR Reviews**

In September 1977, Chautauqua County, as SEQR lead agency, accepted a Draft Environmental Impact Statement (DEIS) for the “Proposed Ellery Sanitary Landfill” (now known as Chautauqua County Landfill). The DEIS, prepared pursuant to SEQR and its implementing regulations, assessed the potentially significant impacts of the proposed landfill on physical and ecological features, socioeconomic conditions, land use, aesthetics and cultural resources. Upon acceptance of the DEIS by the Department of Public Works, a public comment period, including two public hearings, provided the public and involved and interested agencies an opportunity to comment on the content of the DEIS. In February 1978, the County prepared and filed a Record of Hearing, (equivalent to the Final Environmental Impact Statement) addressing pertinent comments received during the public comment period. In April 1978, the County prepared and filed a Notice of Determination, approving construction of the initial stage of the landfill which was completed in 1981.

In 1988, the Chautauqua County Department of Planning and Development (CCDPD), as SEQR lead agency, proposed a vertical expansion of the existing landfill to increase its height and associated capacity. The proposed increased final elevation ranged from 1690 feet to 1750 feet above mean sea level (AMSL). The CCDPD prepared a Draft and Final Supplemental Environmental Impact Statement which supplemented the original EIS prepared in 1977/1978. In January 1989, the CCDPD prepared and filed a Statement of Findings which, in part, certified that

the requirements of SEQR were met. Applicable permits were subsequently issued approving the proposed vertical expansion.

In 2008, the CCDPF proposed an additional vertical expansion of the existing landfill to increase its height and associated capacity. With the NYSDEC acting as SEQR lead agency, the CCDPF prepared a Draft and Final Supplemental Impact Statement which further supplemented the original EIS prepared in 1977/1978. The Draft SEIS and Final SEIS were accepted by the NYSDEC in July and September 2009, respectively. The NYSDEC and County subsequently issued Statements of Findings and permits/approvals were issued in October 2009. Construction of the supplemental liner and cover system is underway and scheduled to be completed in 2010.

## **2.2 Supplemental SEQR Review**

The proposed Project, which involves the lateral expansion of the original footprint of the existing landfill by CCDPF, is as an “action” subject to SEQR because it involves physical alterations that may affect the environment by changing the use, appearance or condition of any natural resource, land area or structure, that a) is being undertaken and funded by an agency; and, b) requires one or more new or modified discretionary approvals from an agency or agencies.

The SEQR review for the Project commenced when the NYSDEC received an application from CCDPF to modify its Part 360 Solid Waste Management Facility Permit (a discretionary approval) and a completed Part 1 of the Full Environmental Assessment Form (EAF). The NYSDEC, in turn, preliminarily classified the Project as a Type I action (requiring coordinated review). The NYSDEC then circulated a letter dated March 12, 2010 to CCDPF, the Project sponsoring agency, indicating its intent to serve as SEQR lead agency for the Project.

On October 27, 2010, after receiving no objection from CCDPF to serve as SEQR lead agency, the NYSDEC issued a Positive Declaration (Attachment A) indicating that the Project may have a significant effect on the environment and that a Draft Supplemental EIS will be prepared. The Positive Declaration and Notice of Public Scoping Meeting (Attachment B) were distributed to involved and interested agencies and published in the Environmental Notice Bulletin and local newspaper.

The NYSDEC has determined that in accordance with 6 NYCRR 617.9(a)(7), a Supplemental EIS would be appropriate because the proposed Project represents a change to the existing landfill project, which had previously been subject to SEQR and evaluated in the original 1977/1978 EIS. The Supplemental EIS will be necessarily limited to the Project's specific significant adverse environmental impacts not addressed, or inadequately addressed, in the original EIS but will otherwise be subject to the full evaluation and procedures of SEQR. Moreover, the Supplemental EIS, where applicable and appropriate, will utilize relevant information and data from the original EIS and the supplemental EISs prepared in 1988 and 2008/2009.

### **2.2.1 Scoping Process and Purpose**

Subsequent to filing a Positive Declaration, public scoping can be conducted to focus the Draft Supplemental Environmental Impact Statement (DSEIS) on potentially significant adverse impacts and to eliminate consideration of those impacts that are irrelevant or non-significant. When scoping is conducted, the project sponsor must submit a draft scope to the SEQR lead agency in accordance with 6 NYCRR §617.8 of the SEQR regulations. The SEQR lead agency must provide a copy of the draft scope to all involved agencies, and make it available to any individual or interested agency that has expressed an interest in writing to the SEQR lead agency. Scoping must include an opportunity for public participation.

The NYSDEC has decided to conduct an optional public scoping meeting and, therefore, has required the CCDPF as Project sponsor to submit this draft scope to the NYSDEC. The NYSDEC, as SEQR lead agency, has provided a copy of this draft scope to all involved agencies, and will make it available to any individual or interested agency that has expressed an interest in writing. The NYSDEC will also provide an opportunity for public participation through the public scoping meeting and also through an extended time period after the meeting to submit written comments.

The public scoping period will commence on November 3, 2010 and end on December 3, 2010, and a public scoping meeting will be held on November 18, 2010 at 7:00 p.m. at Chautauqua County (Jamestown) Airport, 3163 Airport Drive, Jamestown, New York. Further details regarding the scoping period and scoping session are provided in the Positive Declaration (Attachment A) and

Notice of Public Scoping Meeting (Attachment B). Substantive comments received during the public scoping period and at the public scoping meeting will be incorporated into the Final Scoping Document. The Final Scoping Document will consist of the draft scoping document, supplemented with a summary of relevant comments incorporating significant issues identified during the public scoping process.

The objectives of public scoping are to:

- Focus the DSEIS on potentially significant adverse impacts and to eliminate consideration of those impacts that are irrelevant or non-significant;
- Prepare a scoping document to include the potentially significant adverse impacts identified both in the Positive Declaration and as a result of consultation with the other involved agencies, interested agencies and the public, including an identification of those particular aspect(s) of the environmental setting that may be impacted;
- Establish the extent and quality of information needed for the preparer to adequately address each impact, including an identification of relevant existing information (including the original EIS and supporting data and documentation), and required new information, including the required methodology(ies) for obtaining new information;
- Identify the range of reasonable alternatives to be considered;
- Make an initial identification of mitigation measures;
- Identify the information/data that should be included in an appendix rather than the body of the DSEIS; and
- Identify those prominent issues that were raised during scoping and determined to be not relevant or not environmentally significant or that have been adequately addressed in prior environmental reviews.

### **2.2.2 Draft Supplemental Environmental Impact Statement and Public Comment Period**

Once public scoping is complete, the CCDPF as the Project sponsor will be responsible for preparation of the DSEIS. A schematic flow chart depicting the SEQR process and a diagram depicting SEQR timeframes are presented in Figures 2 and 3. The purpose of the DSEIS is to facilitate a thorough environmental review of the Project and the issues identified in the scoping process. This includes describing the environmental setting, identifying the relevant potential impacts, discussing measures to mitigate or lessen those impacts, and evaluating reasonable alternatives.

The CCDPF will prepare the DSEIS for review by the NYSDEC as SEQR lead agency. After the NYSDEC determines that the DSEIS is adequate for public and agency review, the public comment period (minimum of 30 days) will commence after a Notice of Completion of DSEIS is issued and published in accordance with the SEQR regulations. The NYSDEC will accept comments on the DSEIS throughout the public comment period.

The NYSDEC, as SEQR lead agency, may also decide to hold a public hearing to solicit further comment on the DSEIS. In determining whether or not to hold a public hearing, the NYSDEC will consider: the degree of interest in the action shown by the public or involved agencies; whether substantive or significant adverse environmental impacts have been identified; the adequacy of the mitigation measures and alternatives proposed; and the extent to which a public hearing can aid agency decision-making by providing an efficient mechanism for the collection of, public comment. The hearing would commence no less than 15 calendar days or no more than 60 calendar days after the filing of the Notice of Completion of the DSEIS by the SEQR lead agency. If required, a Notice of Hearing would be published in the local newspaper at least 14 calendar days in advance of the public hearing. In the event a hearing is held, the public comment period would extend at least 10 days after the date of the hearing.

### **2.2.3 Final Supplemental Environmental Impact Statement**

Following the conclusion of the public comment period, the NYSDEC must cause to be

prepared a Final Supplemental Environmental Impact Statement (FSEIS), which responds to and addresses public and agency comments. The FSEIS includes the DSEIS, the substantive comments received during the public comment period and at the public hearing, if held, responses to those comments, and any appropriate revisions to the DSEIS. Upon completion of the FSEIS, the NYSDEC will file and distribute a Notice of Completion of FSEIS in accordance with the SEQR regulations. A minimum of 10 days must pass before the involved agencies make findings and approve or disapprove any discretionary permits that may be associated with the Project.

#### **2.2.4 Statement of Findings**

The final formal step in the SEQR process is the preparation of the Statement of Findings. In order for the Project to be approved, the involved agencies must prepare Statements of Findings that positively demonstrate that the Project minimizes or avoids the adverse environmental effects to the maximum extent practicable and that the Project incorporates practicable mitigation measures that were identified in the SEQR process. These findings must be based on facts and conclusions derived from the DSEIS, public and agency comments, any hearing records and the approved FSEIS. The Statements of Findings will identify the considerations that have been weighed and each agency's rationale for its approval or disapproval of the Project. Each involved agency will issue findings based on its own unique jurisdiction.

### **3.0 SEQR REVIEW AGENCIES**

In the SEQR process, there are two types of agencies: involved agencies (including the SEQR lead agency), and interested agencies. The SEQR lead agency is the one agency among all of the involved agencies that has the responsibility under SEQR to coordinate the environmental review process for the Project. The NYSDEC has been designated as the SEQR lead agency for the Project. Through the coordinated review process that occurred, other involved agencies, including state and local agencies, were provided the opportunity to submit comments on the Project and concur with or not object to the designation of NYSDEC as the SEQR lead agency.

Involved agencies have jurisdiction to fund, approve, or directly undertake an action. Involved agencies and their associated roles identified to date for the Project include:

- New York State Department of Environmental Conservation (SEQR Lead Agency, modifications to Part 360 Solid Waste Management Facility Permit, Title V Air Facility Permit, Section 401 Water Quality Certification, and SPDES Multi-Sector Stormwater General Permit Associated with Industrial Activities)
- Chautauqua County Department of Public Facilities, Division of Solid Waste (directly undertaking the action)

Interested agencies are agencies that do not have (at the time of the environmental review) permitting, funding or approval jurisdiction directly related to the Project, but may desire to participate in the review process because of their expertise or interest regarding the action. However, it is noted that, while federal agencies are not considered involved agencies pursuant to SEQR, such agencies (e.g., U.S. Army Corps of Engineers) may have permit jurisdiction over certain aspects of the Project. Interested agencies may also include state or local agencies. A preliminary list of potentially interested agencies is provided below. It is noted that following scoping, the jurisdictional position of these agencies may change.

- United States Army Corps of Engineers
- United States Fish & Wildlife Service
- United States Environmental Protection Agency
- Federal Aviation Administration

- New York State Office of Parks, Recreation & Historic Preservation
- New York State Department of Transportation
- Chautauqua County Division of Transportation and Engineering
- Chautauqua County Airport
- Chautauqua County Department of Health
- City of Jamestown Board of Public Utilities
- Town of Ellery, New York

#### **4.0 CONTENT OF THE DSEIS**

The purpose of an EIS is to facilitate a thorough environmental review of the Project and the issues identified in the scoping process. The DSEIS will address those specific significant adverse environmental impacts not addressed or inadequately addressed in the original EIS that may arise due to the change (i.e., lateral expansion) in the original landfill project.

The DSEIS will describe the environmental setting, identify the relevant potential impacts, discuss measures to mitigate or lessen those impacts, and evaluate reasonable alternatives. The DSEIS will be prepared in accordance with 6 NYCRR, Part 617.9(b) of SEQR and will include a cover sheet, table of contents, figures, references and appendices, and the following sections:

##### **4.1 Executive Summary**

The executive summary will provide a concise overview of the Project and DSEIS. It will include a brief description of the Project, and a listing of significant beneficial and adverse impacts, mitigation measures proposed, alternatives considered, and permits, approvals, authorizations and funding.

##### **4.2 State Environmental Quality Review Act Process**

This section will provide a summary of the SEQR process conducted for the Project, referencing the requirements of SEQR (Article 8 of the New York State Environmental Conservation Law) and its implementing regulations (6 NYCRR Part 617). Specifically, this section will discuss the classification of the action, SEQR lead agency designation, the scoping process, and the original DEIS/FEIS prepared for the landfill.

##### **4.3 Description of the Proposed Action**

This section will include a concise description of the Project and its purpose, public need and benefits. This description will include site background and history, Project location and objectives, a

description of the Project, including a description of the design and layout, construction and operation, phasing and timing.

#### **4.4 Environmental Setting**

This section will present the baseline setting of the physical area and community within which the Project will be developed. This section will serve as an update to the original EIS which in some instances has become outdated. It will include a discussion of the following:

- Local and regional geographic and topographic setting;
- Existing land uses and zoning controls for the Project site and surrounding areas;
- General environmental setting;
- Socioeconomic setting;
- Existing visual setting for the study area and the project site;
- Geologic and topographic setting; and
- Emergency contingency plans associated with the existing landfill.

#### **4.5 Potential Environmental Impacts and Mitigation Measures**

This section will discuss the Project's potential significant impacts, general method of assessment and mitigation measures. The information sources used to assess each potential impact will be reviewed and summarized in the DSEIS. It is anticipated that the DSEIS will address each of the following potential impact areas:

- Geology and Soils;
- Land Use and Community Character;
- Air Quality and Climate Change;
- Surface and Groundwater Quality;
- Ecology;
- Visual and Aesthetic Resources;
- Noise;

- Odors;
- Traffic;
- Cultural Resources;
- Leachate Collection and Treatment;
- Socioeconomic Factors; and
- FAA Requirements

#### **4.5.1 Geology and Soils**

The Project will involve excavation and removal of large quantities of soil in and around the expansion area. Issues to be addressed in the DSEIS include impacts to existing topography and physiography, geology and soils, applicable mineral rights, on-site wells, and future uses of land resources. Mitigation measures to eliminate or reduce impacts to these resources will also be discussed in the DSEIS.

Several surface and subsurface site investigations which included borings, groundwater monitoring and geotechnical analyses have been conducted to determine the subsurface conditions beneath the Project site. This data will be used to develop a conceptual design and to assess potential surface and subsurface impacts from the Project. In addition, soils information will also be obtained from the Natural Resources Conservation Service or from county sources where appropriate. Any surface and subsurface investigations conducted for the Project will be presented as an appendix and summarized in the appropriate section of the DSEIS.

#### **4.5.2 Land Use and Community Character**

Land use within the Project area consists primarily of undeveloped, vacant land. Of the 74.1-acre Project area, 21.5 acres are non-agricultural meadow or brushland, 47.8 acres are wooded, 2.8 acres are federal jurisdictional wetlands, and 2.0 acres are roads and other paved surfaces. Surrounding land uses include inactive agricultural cropland or cropland pasture, wooded, brush land, and low density residential development. Lands within approximately one-mile of the Project are zoned “Agricultural” (A).

The DSEIS will provide a detailed description of the existing and proposed land use and community character within the Project area and its surroundings. A field reconnaissance and readily available data will be utilized for this purpose, which will include the original and supplemental EISs, local tax assessment and zoning records and/or New York State Classification and Ownership codes. The DSEIS will include an evaluation of potential impacts on land use and community character. Mitigation measures associated with land use and community character, if appropriate, will also be included in the DSEIS.

#### **4.5.3 Air Quality**

Air emissions from the existing landfill are currently regulated under a Title V Air Permit and controlled through the landfill gas collection and control system (electric generating facility and backup flare). While the Title V Air Permit would need to be modified to include any increased emissions generated from the Project, such additional emissions would be controlled through an expanded landfill gas collection and control system. Appropriate engineering calculations and analyses and/or evaluations will be performed to estimate the increase and dispersion of such emissions and a review of the applicable state and federal air pollution regulations will be conducted to determine the impact of the Project on the landfill's existing Title V Air Permit. Appropriate mitigation measures will also be presented in this section of the DSEIS, including a discussion of construction-related impacts (e.g., fugitive dust) and the Project's expanded landfill gas collection and control system and existing cogeneration facility.

This section will also include a general assessment of greenhouse gas emissions generated from the Project utilizing the NYSDEC's *Solid Waste Management Facility Permitting Policy (DSHM-SW-09-01)* or *Guide for Assessing Energy Use and Greenhouse Gas Emissions in Environmental Impact Statements*.

#### **4.5.4 Surface and Groundwater Quality**

##### **4.5.4.1 Surface Waters**

Two sub-tributaries to Tributary 18 to Cassadaga Creek were identified within the Project area during a field reconnaissance and will be impacted by the Project. Both sub-tributaries are intermittent streams draining a relatively small drainage basin. The two sub-tributaries are referred to, from east to west, in accordance with nomenclature previously established by the CCDPF, as Streams S-2 and S-3.

As stated, the two sub-tributaries will be impacted by the Project. The Project will interrupt their channels and divide their watersheds. Therefore, water from the upslope portion of the watersheds will be diverted in closed pipes under the liner system of the proposed lateral expansion. The pipes will follow approximately the alignment of the former intermittent stream channels.

The pipes will discharge south of Towerville Road into ponds constructed on the original channels. The ponds will be designed to meet the technical requirements of SPDES General Permit GP-0-10-001 for Stormwater Discharges from Construction Activity. (It will be permitted as a modification to the landfill's existing Permit for Stormwater Discharges from Industrial Activity, but it must meet the technical requirements of GP-0-10-001). The ponds will capture any sediment-laden runoff from the areas disturbed during construction of the Project, and they will detain runoff from the developed landfill in order to enhance water quality and so that the rate of flow does not exceed that under pre-development conditions.

The SDEIS will assess the Project's potential impact on the existing surface water resources, and discuss mitigation measures.

The Project will require modification to the CCDPF's existing State Pollutant Discharge Elimination System (SPDES) Stormwater General Permit from Industrial Activities regarding the discharge of stormwater from the proposed detention ponds. The DSEIS will address the measures to be implemented to ensure that discharges from the ponds maintain the water quality standards of the receiving water(s). Stormwater management measures including implementation of best

management practices in accordance with a Stormwater Pollution Prevention Plan will also be discussed as mitigation measures.

#### **4.5.4.2 Groundwater**

Several subsurface site investigations, which included borings and installation and sampling of groundwater monitoring wells, have been completed for the Project, in part to provide baseline information on groundwater depth and quality. In addition, hydrogeology within the general Project area has been thoroughly studied over the years and is well understood, and a detailed, Project-specific, hydrogeologic investigation has been undertaken in the immediate Project area to determine the characteristics of subsurface layers beneath the Project site. This data will be utilized in development of a design for the Project.

Potential impacts the Project may have on groundwater resources will be identified and discussed in the DSEIS. Mitigation measures, including installation of a multi layer landfill liner, leachate collection system, porewater relief system and groundwater monitoring program, will be presented in the DSEIS to minimize potential impacts to groundwater resources in the Project area.

#### **4.5.4.3 Wetlands**

A Wetlands Delineation in accordance with the 1987 U.S. Army Corps of Engineers (USACE) Manual was conducted to determine the presence and extent of jurisdictional wetlands that may be present in the Project area. After USACE's review of the Wetlands Delineation Report and field reconnaissance, the USACE issued a Jurisdictional Determination in July 2009 indicating that 12 federal jurisdictional wetlands comprising approximately 5.89 acres are located in the general Project area. Two intermittent stream courses (including a tributary to one of the stream courses) were also identified in the general Project area and affirmed by the USACE. Three other wetland areas totaling 0.08 acres were determined to be isolated by the USACE and, therefore, are not subject to the implementing regulations of Section 404 of the Clean Water Act.

No New York State freshwater wetlands were identified in the Project area as part of the delineation or mapped in the vicinity of the Project.

Approximately 2.8 acres of the 5.89 acres of federal jurisdictional wetlands identified within the general Project area will be unavoidably impacted by the Project. These wetland impacts will be addressed in the wetland mitigation plan developed in accordance with an individual permit to be obtained from the USACE. Because the Project requires an individual permit, it is likely that issuance of Section 401 Water Quality Certification by the NYSDEC will be required. The mitigation plan will describe how proposed mitigation will serve as adequate compensation for the potential loss of wetland functions and values within the Project area and include a discussion of avoidance, minimization and mitigation of wetland impacts. As part of the USACE individual permit process, the USACE requires an analysis of alternatives for the Project, and the preliminary wetlands survey conducted in 2004 within and to the north of the Project area will be utilized, in part, for this purpose. The wetland delineation report, jurisdictional determination, and associated wetland mitigation plan will be presented as appendices and summarized accordingly in this section of the DSEIS.

#### **4.5.5 Ecology**

The Project area consists of predominantly meadow and wooded, undeveloped land. Approximately 2.8 acres of federal jurisdictional wetlands are also located within the Project area. In 2004 as part of the Preliminary Site Investigation, a Threatened and Endangered Species Assessment was completed for the Project area, which included field surveys and consultation with the U.S. Fish & Wildlife Service and the NYSDEC Natural Heritage Program. The results indicated that two bivalve species – the clubshell (*Pleurobema clava*), an endangered species, and the Rayed Bean (*Villosa fabalis*), a candidate species – may be found in the tributaries of Cassadaga Creek in the vicinity of the Project. This assessment will be updated through additional agency consultations and field inspections, as appropriate.

In addition, game and pest species in the Project area will be assessed, utilizing the original DEIS as a baseline. The ecological assessments conducted prior to construction of the existing landfill, which are described in the original DEIS, the Threatened and Endangered Species Assessment completed in 2004, and updated field surveys and agency consultations, will be utilized to determine whether mitigation is appropriate. Any proposed mitigation related to potential

ecological impacts will be summarized accordingly in this section of the DSEIS.

#### **4.5.6 Visual and Aesthetic Resources**

The Project has the potential to change the character or quality of important aesthetic resources and therefore a visual impact assessment will be prepared. This assessment will include defining the visual characteristics of the Project, the Project site, and surrounding areas, and assessing the potential impact to the existing visual environment using mapping, photographs, and/or simulations, as appropriate.

The assessment will include discussions on views from adjacent areas and will focus on visual and aesthetic impacts of the landfill grade modifications as viewed from vantage points outside the Project site. Visual impact assessments prepared for the original and previous vertical expansion EISs will also be utilized in this assessment, where applicable and appropriate.

Mitigation measures will be summarized in the DSEIS and may include use of on-site landscaping to screen the landfill and use of off-site landscaping, including coordination of conifer plantings with the Chautauqua County Soil and Water Conservation District (SWCD), to establish permanent screening for the landfill.

The assessment will be presented as an appendix and summarized accordingly in this section of the DSEIS.

#### **4.5.7 Noise**

Noise generated at and in the vicinity of the existing landfill includes nearby road traffic and landfill operating equipment, as well as vehicles hauling waste. As part of the original and supplemental EISs previously prepared, the County performed noise assessments to determine the landfill operations' potential impacts on noise sensitive receptors. Noise generated from landfill operating equipment currently adheres to or is below Part 360 requirements.

Construction of the landfill expansion will require the use of heavy equipment, such as backhoes, compactors, graders, bull dozers and trucks. Noise produced by heavy equipment will vary throughout the day and during the entire construction period and may result in an increase in noise levels at receptor locations. Noise levels generated during normal landfill operations are not anticipated to change significantly from current levels, as the amount and rate of waste disposal is expected to remain at current levels. However, landfill construction and normal landfill operations will move westward as a result of the Project, potentially leading to higher noise levels to the west of existing operations and decreased noise levels to the east.

To appropriately assess potential impacts to noise sensitive receptors from the Project, a supplemental assessment will be conducted to document the existing sound levels in and around the existing landfill; quantify the potential noise impact from the Project construction noise and the long-term operating noise impacts during operating activities; and evaluate and identify noise control strategies (including working mufflers on all equipment, limiting hours of operation, restricting use of exhaust braking systems, and using backup alarms that adjust to ambient conditions) to meet applicable sound criteria. Noise impact assessments prepared for the original and previous vertical expansion EISs will also be utilized in this assessment, where applicable and appropriate. Any proposed mitigation related to potential noise impacts will be summarized in this section of the DSEIS. It is noted that the Town of Ellery does not have a noise ordinance.

The assessment will be presented as an appendix and summarized accordingly in this section of the DSEIS.

#### **4.5.8 Odors**

Previous odor evaluations performed for the existing landfill and summarized in the original and supplemental EISs will be utilized, as appropriate, to determine potential off-site/community impacts. In addition, ongoing odor monitoring efforts at and adjacent to the existing landfill will be discussed in the DSEIS. Potential odor impacts and any mitigation measures, where appropriate, will be presented and summarized in the appropriate section of the DSEIS.

#### **4.5.9 Traffic**

Roadways in the vicinity of the Project include Towerville Road, Fluvanna Town Line Road (CR 59) and Condin Road. County Road 380 provides the primary access to the Facility from the south and Interstate 86. NYS Route 60 provides access to Interstate 90 (the NYS Thruway) to the north.

Traffic related to current operations is primarily from trucks hauling solid waste to the landfill. Additional traffic volumes are generated from employee and visitor vehicle traffic (primarily passenger vehicles).

Traffic volumes associated with the proposed Project are not anticipated to increase significantly. An evaluation of existing traffic data collected from State and County sources and an evaluation of the road network within the study area will be included in the DSEIS. Any previous traffic assessments and recommendations included in such assessments will be reviewed and utilized in the traffic evaluation for the Project. Existing trip generation data for the landfill will also be collected utilizing landfill records and included in the evaluation. In addition, any potential fluctuations in traffic that would be associated with current and permitted landfill disposal rates will be evaluated.

Mitigation measures, if appropriate, will also be presented in this section of the DSEIS.

#### **4.5.10 Cultural Resources**

As part of a Preliminary Site Investigation completed for the Project in 2005, the County consulted with the New York State Office of Parks, Recreation, and Historic Preservation (OPRHP) to determine that Project's potential impact on cultural resources. The footprint of the Project is entirely within the Area of Potential Effect reviewed by the OPRHP. The OPRHP determined in a letter dated September 30, 2004 that the "project will have No Impact upon cultural resources in or eligible for inclusion in the State and National Registers of Historic Places." In a letter dated April 20, 2010, the OPRHP reaffirmed the 2004 determination that cultural resources will not be impacted by the Project.

A summary of the OPRHP's determinations will be included in the DSEIS. Correspondence generated as part of the OPRHP consultation process will be included in an appendix to the DSEIS.

#### **4.5.11 Leachate Collection and Treatment**

This section of the DSEIS will compare the amount of leachate generated by the Project with the capacity of the sanitary sewer system and treatment facilities, owned and operated by the Jamestown Board of Public Utilities (BPU). The BPU will be consulted to determine whether it can accommodate an increase in the average discharge rate, or whether upgrades to its sewer infrastructure will be necessary. Mitigation measures, if appropriate, including leachate minimization strategies, will also be discussed in this section of the DSEIS.

#### **4.5.12 Socioeconomic Factors**

The original DEIS/FEIS issued in 1977/1978 and the supplemental EIS issued in 1988 included an assessment of socioeconomic factors, including demographic, tax base, income and employment factors. This section of the DSEIS will update the original and supplemental DEIS' socioeconomic assessments to identify any beneficial or adverse impacts to demographic, tax base, income or employment from the Project. Mitigation measures, if appropriate, will also be discussed in this section of the DSEIS.

#### **4.5.13 FAA Requirements**

Due to the proposed design of the Project, a Notice of Proposed Construction or Alteration will be filed with the Federal Aviation Administration. This section of the DSEIS will include an evaluation of the potential effects on aircraft safety. Previous notices filed and evaluations conducted for the existing landfill will be utilized for this evaluation and summarized in this section of the DSEIS.

#### **4.6 Alternatives to the Project**

The DSEIS must include a description and evaluation of the range of reasonable alternatives to the Project that are feasible, considering the objectives and capabilities of the Project sponsor. The description and evaluation of each alternative must be at a level of detail sufficient to permit a comparative assessment of the alternatives discussed. The range of alternatives must include the no action alternative which should evaluate the adverse or beneficial site changes that are likely to occur in the reasonably foreseeable future, in the absence of the Project. An examination of reasonable alternatives in the DSEIS will include:

- No Action Alternative – The No Action Alternative will address the potential impact of not expanding the landfill, including exportation of waste. This alternative would include a discussion of the potential impacts that would result from closure of the existing landfill once the approved design capacity is exhausted. Potential impacts include the exportation of waste to existing locations outside of County limits.
- Alternative Sites – Consideration will be given to alternative sites adjacent to the existing landfill. Any previously conducted alternative landfill siting studies will be referenced and summarized in this section, as appropriate.
- Alternative Waste Disposal Technologies – Alternative technologies associated with the disposal of solid waste will be discussed in the DSEIS. This may include current methods implemented to reduce solid waste volume including recycling and composting operations.
- Alternative Scale, Magnitude and Design – Alternatives to the scale and design of the proposed lateral and vertical extent of the Project will be discussed in the DSEIS. Potential impacts from each of the alternatives will be discussed so that a comparative assessment to the Project can be evaluated.

## **4.7 Other Required Statements**

### **4.7.1 Construction-Phase Impacts**

This section will include a discussion of reasonably related short-term impacts, including construction impacts. Applicable short-term impacts may include air quality, dust and noise issues, water quality and storm water management, and soils management associated with site work.

### **4.7.2 Cumulative Impacts**

This section will include an evaluation of impacts associated with development of the entire landfill area and each stage of the Project, where appropriate.

### **4.7.3 Unavoidable Adverse Environmental Impacts**

This section will identify and discuss any adverse environmental impacts that cannot be avoided or adequately mitigated if the Project is implemented. A summary of environmental impacts, which are unavoidable or cannot be mitigated will be prepared for inclusion in the DSEIS.

### **4.7.4 Irreversible and Irrecoverable Commitment of Resources**

This section will identify irreversible or irretrievable commitment of resources that would be consumed, converted or made unavailable for future use as a result of implementation of the Project. This section will include a comparison of the conceptual-level estimates for capital and operating costs for the Project and its alternatives.

### **4.7.5 Growth-Inducing Aspects**

This section will include a discussion of growth-inducing aspects of the Project, where applicable and significant. This section will focus on the potential of the Project to induce further development.

#### **4.7.6 Effects on the Use and Conservation of Energy**

This section will provide a description of energy sources expected to be used by the Project and anticipated levels of energy consumption. This section will also discuss energy conservation measures that will be utilized as part of the Project (e.g., the existing cogeneration facility) or that could be implemented during construction of the Project. An assessment of energy use and mitigation measures, if appropriate, will be included in this section and prepared in accordance with NYSDEC's *Guide for Assessing Energy Use and Greenhouse Gas Emissions in Environmental Impact Statements*.

#### **4.7.7 Solid Waste Management**

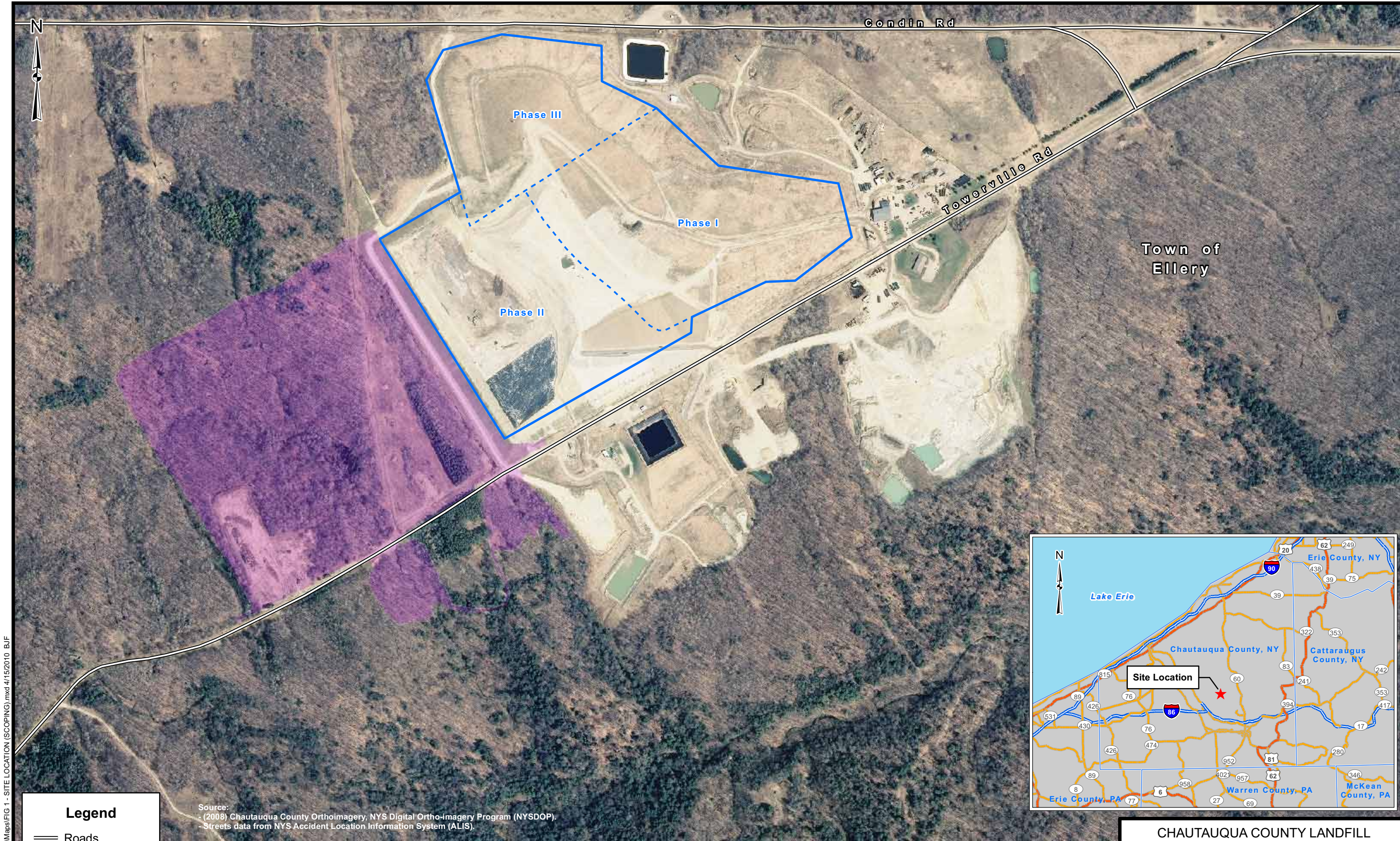
This section will include an assessment of the potential impacts of the Project on solid waste management utilizing NYSDEC's *Solid Waste Management Facility Permitting Policy (DSHM-SW-09-01)*. Moreover, the Project will be assessed for consistency with both the Chautauqua County Solid Waste Management Plan and New York State Solid Waste Management Plan. This will include a review of these plans and consultation with local and state government agencies and service providers, where appropriate, to assess solid waste management impacts of the Project.

## **5.0 INFORMATION TO BE INCLUDED IN APPENDICES IN THE DSEIS**

The DSEIS appendices will contain supporting studies and technical reports that supplement and support the narrative in the DSEIS. The methodologies and results of the studies and technical reports will be summarized and explained in the main body of the DSEIS. The following is a preliminary listing of documents that may be included in the DSEIS appendices:

- Environmental Report on the Proposed Ellery Sanitary Landfill, September 1977;
- Environmental Report on the Change in Elevation and Volume of the County Sanitary Landfill in the Town of Ellery, December 1988;
- Draft and Final Supplemental Environmental Impact Statement for 100-Foot High Vertical Expansion, July and September 2009;
- Solid Waste Management Facility Part 360 Application;
- SEQR documentation including Environmental Assessment Form, Positive Declaration/Notice of Public Scoping Meeting, Final Scoping Document and Notice of Completion of DSEIS/Notice of SEQR Hearing;
- Correspondence (e.g., OPRHP, New York Natural Heritage Program);
- Wetlands Delineation Report, Jurisdictional Determination and Mitigation Plan;
- Visual and Noise Assessments; and
- Other supporting studies and reports.

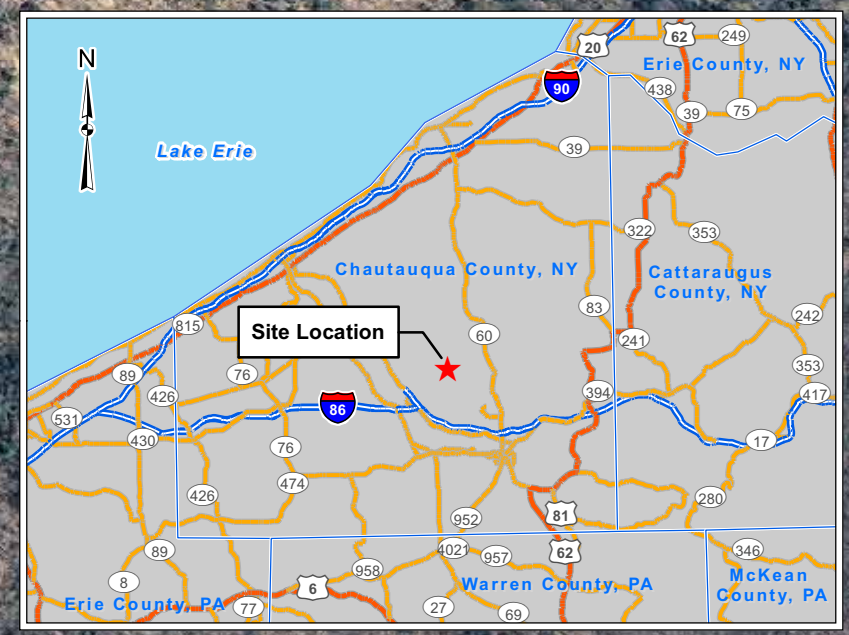
## **FIGURES**



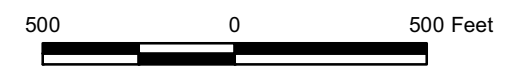
Source:  
 - (2008) Chautauqua County Orthoimagery, NYS Digital Ortho-imagery Program (NYSDOP).  
 - Streets data from NYS Accident Location Information System (ALIS).

**Legend**

- Roads
- Project Area
- Existing Landfill



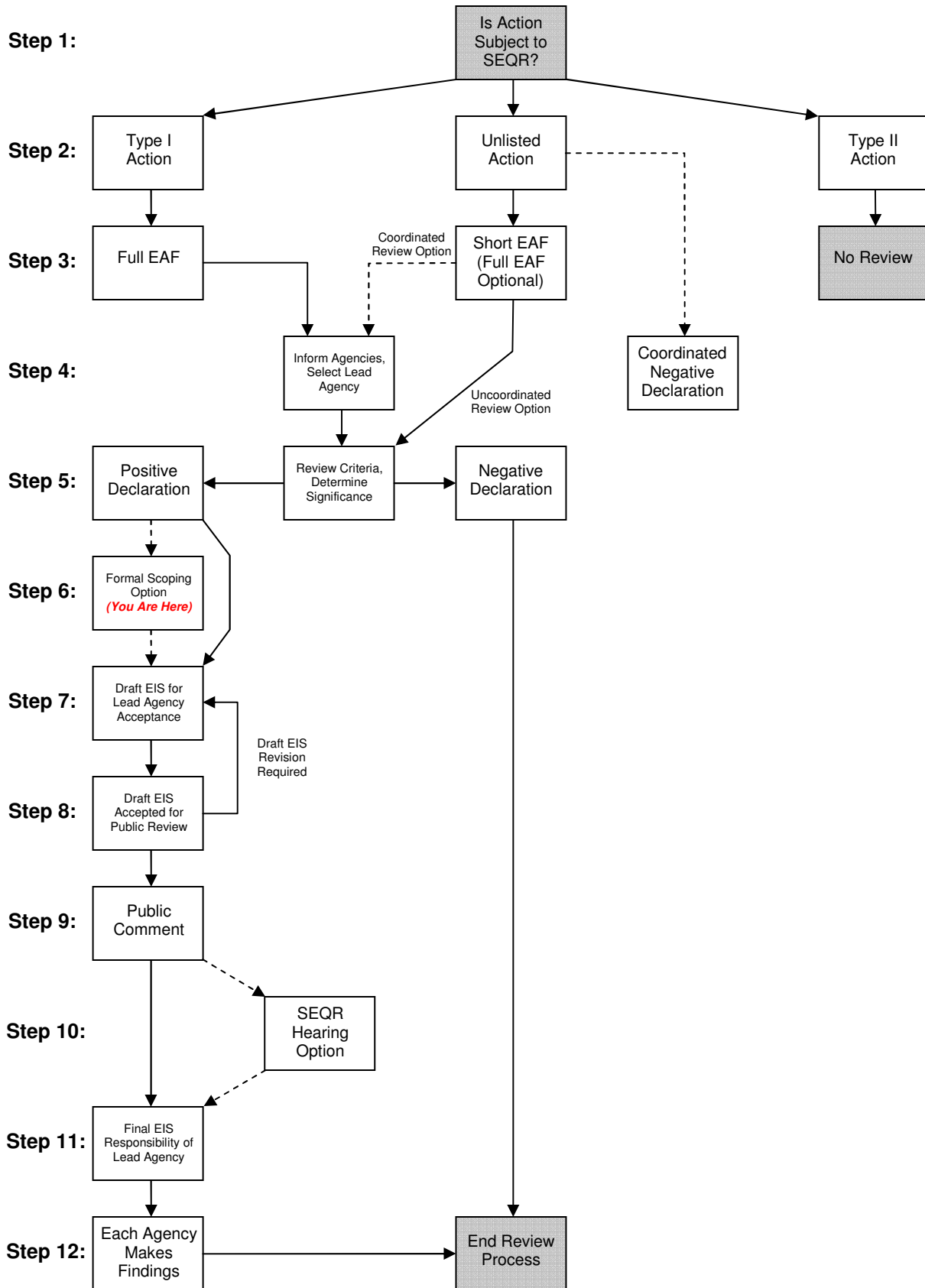
**CHAUTAUQUA COUNTY LANDFILL  
 EXISTING SITE AND PROJECT LOCATION**



**FIGURE 1**

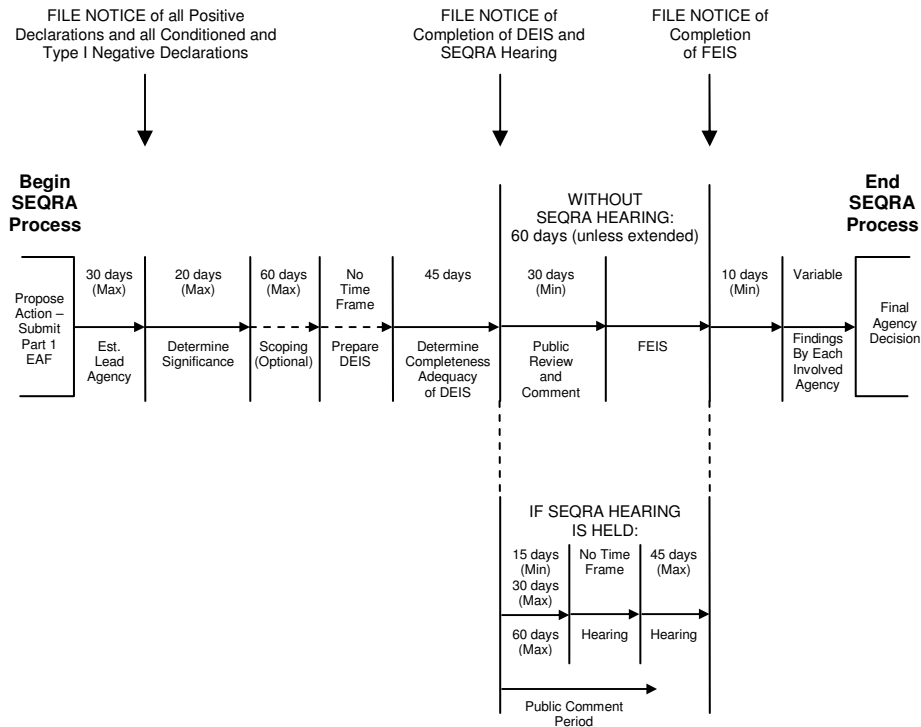
I:\1175722\B\GIS\Maps\FIG 1 - SITE LOCATION (SCOPING).mxd 4/15/2010 B.J.F

**FIGURE 2  
SEQRA PROCESS FLOW CHART**



Source: Figure adapted from the SEQRA Flow Chart & Time Frames (NYSDEC, 2003).

**FIGURE 3  
SEQRA PROCESS TIME FRAMES**



**Notes:**

1. All time frames may be extended by mutual consent of involved parties.
2. The lead agency must determine the significance of the action within 20 days of its establishment as lead agency, or within 20 days of its receipt of all information it may reasonably need to make the determination of significance, whichever occurs later.
3. The lead agency will use the final written scope, if any, and the standards contained in 6 NYCRR 617.9 to determine whether to accept the draft EIS as adequate with respect to its scope and content for the purpose of commencing public review. This determination must be made in accordance with the standards in 6 NYCRR 617.9 within 45 days of receipt of the draft EIS. If the draft EIS is determined to be inadequate, the lead agency must identify in writing the deficiencies and provide this information to the project sponsor. The lead agency must determine whether to accept the resubmitted draft EIS within 30 days of its receipt.
4. Publish hearing notice in newspaper of general circulation at least 14 days before a public hearing. The hearing may commence on the 15<sup>th</sup> day.
5. Public comment period must remain open until 10 days after the close of hearing.
6. When applicant is involved, lead agency findings and decisions must be made within 30 days of filing the EIS.

**ATTACHMENT A**  
**POSITIVE DECLARATION**

STATE ENVIRONMENTAL QUALITY REVIEW  
POSITIVE DECLARATION  
NOTICE OF DETERMINATION OF SIGNIFICANCE  
AND INTENT TO PREPARE A DRAFT SEIS  
DEPARTMENT APPLICATION NUMBER 9-0636-00006/00013

This notice is issued pursuant to Part 617 of the State regulations for Article 8 (the State Environmental Quality Review Act - SEQRA) of the Environmental Conservation Law. The New York State Department of Environmental Conservation (the Department), as SEQRA Lead Agency, has determined that the proposed action described below may have a significant effect on the environment and that a Draft Supplemental Environmental Impact Statement will be prepared after scoping.

TITLE OF ACTION:

Chautauqua County Landfill Lateral Expansion  
Town of Ellery, Chautauqua County

PERMIT JURISDICTION:

The Department's jurisdiction includes permits required by Article 27, Title 7 (Solid Waste Management), Article 17 (State Pollutant Discharge Elimination System) and Article 19 (Air Pollution Control). No discretionary regulatory approvals from other agencies, the Town of Ellery or Chautauqua County have been identified.

SEQRA STATUS:

Type I Action - Applicable Threshold: The expansion of an existing nonresidential facility causing a physical disturbance and alteration of more than 10 acres of land pursuant to 6NYCRR Part 617.4(6)(b)(i).

DESCRIPTION OF ACTION:

Chautauqua County owns and operates the Chautauqua County Landfill, a municipal solid waste disposal facility in the Town of Ellery, New York. The existing landfill footprint occupies about 81 acres and is located on approximately 813 acres of contiguous land. This action involves a lateral expansion of the waste placement area (approximately 53 acres) to the west of the existing landfill. The landfill area together with the perimeter berms, channel and access roads, plus stormwater control ponds totals approximately 74 acres. The proposed action would extend the life of the landfill by about 20 years. The height of the lateral expansion area would be equal to the current design elevation of 1,850 feet. The proposed rate of waste acceptance would not be changed from the existing rate of 1,883 tons per day.

## LOCATION:

The Chautauqua County Landfill is located at 3889 Towerville Road, Jamestown, New York 14701, in the Town of Ellery, Chautauqua County.

## REASONS SUPPORTING THIS DETERMINATION:

During review of this project, the Department identified the following significant and/or potentially significant adverse environmental impacts which must be evaluated in respect to avoidance and potential mitigation of adverse impacts for permit/approval decision purposes:

1. The proposal may adversely affect surface and groundwater water quality due to landfill construction and operation activities, including the potential for surface and ground water to be adversely affected by landfill leachate contamination.
2. The landfill expansion has the potential to cause increased runoff and erosion. There may be adverse impacts to waters and wetlands associated with the proposed landfill construction and operation.
3. Potential significant impacts to air quality could result from increased landfill gas production and fugitive dust emissions. Potentially significant safety and health effects could result from landfill gas migration and release. Impacts on electric power generation will be analyzed in the DSEIS
4. The additional landfill area may create potentially significant adverse noise and odor impacts from construction and operation.
5. There may be potentially significant impacts to natural resources on the site resulting from the lateral expansion.
6. Potentially significant impacts may result from changes to the physical landscape and from construction in areas with relatively steep slopes.
7. Impacts on visual resources may be significant. The landfill expansion will extend the period of time roads are subjected to truck traffic.
8. Impacts to local community services such as fire protection, public water supply and wastewater treatment (i.e. leachate), will be analyzed in the DSEIS.

The Department of Environmental Conservation concludes that the project may have a significant effect on the natural resources of the State and/or the health, safety and welfare of the public and may not be consistent with social and economic considerations. Therefore, a Draft Environmental Impact Statement will be prepared. In reaching this decision, the Department carefully considered the "Criteria" for Determination of Significance listed in the SEQR Regulations (6 NYCRR 617.7).

FOR FURTHER INFORMATION:

Contact Person: David S. Denk, Deputy Permit Administrator  
New York State Department of Environmental Conservation  
270 Michigan Avenue, Buffalo, New York 14203  
716-851-7165

Date: October 27, 2010



---

David S. Denk  
Regional Permit Administrator

cc: Mr. Mark Hans, NYSDEC, Division of Solid & Hazardous Materials  
Mr. Larry Sitzman, NYSDEC, Division of Air Resources  
Honorable Catharine M. Young, Assemblywoman 149th District  
Honorable Gregory J. Edwards, Chautauqua County Executive  
Honorable Arden E. Johnson, Supervisor, Town of Ellery

**ATTACHMENT B**  
**NOTICE OF PUBLIC SCOPING MEETING**

**New York State Department of Environmental Conservation  
Notice of Public Scoping Meeting  
Chautauqua County Landfill Proposed Lateral Expansion**

**MEETING DATE:** Thursday, November 18, 2010, 7:00 P.M.

**LOCATION:** Chautauqua County (Jamestown) Airport  
3163 Airport Drive, Jamestown, New York 14701

The New York State Department of Environmental Conservation (DEC), as Lead Agency pursuant to Part 617 of the State regulations for the State Environmental Quality Review (SEQR) Act, has scheduled a public meeting for the purpose of determining the scope of the Draft Supplemental Environmental Impact Statement (DSEIS) to be prepared for the proposed action described in this notice. The DEC has determined that the project may have a significant effect on the environment and issued a SEQR Positive Declaration requiring the applicant to prepare a DSEIS.

**APPLICANT:** Chautauqua County Division of Solid Waste  
3889 Towerville Road, Jamestown, New York 14701

**STATE AND LOCAL PERMITS/APPROVALS REQUIRED FOR THE PROJECT:**

- Solid Waste Management Permit (DEC)
- Air Pollution Control Permit (DEC)
- State Pollutant Discharge Elimination System Permit (DEC)

**PROJECT DESCRIPTION AND LOCATION:**

The action involves a 53 acre lateral expansion of the Chautauqua County Landfill to the west of the existing landfill. The landfill area together with the perimeter berms, channel and access roads, plus stormwater control ponds totals approximately 74 acres. The proposed action would extend the life of the landfill by about 20 years. The height of the lateral expansion area would be equal to the current design elevation of 1,850 feet. The proposed rate of waste acceptance would not be changed from the existing rate of 1,883 tons per day. The proposed landfill expansion is located at 3889 Towerville Road in the Town of Ellery, Chautauqua County.

**MEETING PURPOSE:**

The purpose of scoping is to define the extent to which environmental impacts identified in the Department's Positive Declaration and project sponsor's Draft Scoping Document will be evaluated in the DSEIS. Scoping will help to ensure that this DSEIS is a comprehensive, accurate and complete document, adequate for public review and which properly evaluates the environmental impacts that may occur if the landfill expansion is approved.

## **PUBLIC MEETING:**

A public meeting will be held on Thursday, November 18, 2010 beginning at 7:00 p.m. at the Chautauqua County (Jamestown) Airport, 3163 Airport Drive, Jamestown, New York 14701. Statements from local government officials, legislators, interested and involved agencies, and the public will be heard after a DEC Staff Statement is read into the record and the applicant gives a brief presentation detailing the proposed project. A stenographic record of the meeting will be prepared. Written statements will also be accepted until December 3, 2010 at the DEC Buffalo office address below.

This meeting location is reasonably accessible to persons with a mobility impairment. Interpreter services will also be made available to deaf persons, at no charge, upon written request to the Contact Person named below within one week prior to the meeting, pursuant to Section 202(1) of the State Administrative Procedures Act.

All persons having an interest in this project are urged to attend or be represented either individually or collectively.

## **AVAILABILITY OF INFORMATION:**

The application file may be reviewed by appointment at the DEC Buffalo Office. In addition, the applicant has provided a Draft Scoping Document containing a summary of the SEQR process and the project proposal. Copies of this Draft Scoping Document will be mailed to residents immediately adjacent to the landfill. Anyone who plans to participate in the scoping meeting by providing comment is urged to obtain a copy of this document prior to the meeting to help them prepare.

The document may be obtained at the meeting or viewed prior to the meeting at the Town of Ellery Town Hall, 25 Sunnyside Ave, Bemus Point; Bemus Point Library, 13 Main Street, Bemus Point; Chautauqua County Landfill Office, 3889 Towerville Road, Ellery or at the DEC Buffalo Office (address below).

In addition, the Draft Scoping Document and other related documents can be viewed on the internet. From Chautauqua County Government Home Page: <http://www.co.chautauqua.ny.us> Use "Departments and Agencies" menu to select the "Public Facilities" link. Pick the "Landfill" icon on the Public Facilities webpage. Then, select the "Proposed Lateral Expansion Documents" link, under "Document and Forms."

**NOTICE DATE:** October 27, 2010

**CONTACT PERSON:** David S. Denk, Regional Permit Administrator  
New York State Department of Environmental Conservation  
270 Michigan Avenue  
Buffalo, New York 14203-2999  
Telephone: (716) 851-7165